



GAT MONTHLY MEMBERSHIP PROGRESS REPORT

Results as of: 6/30/2023

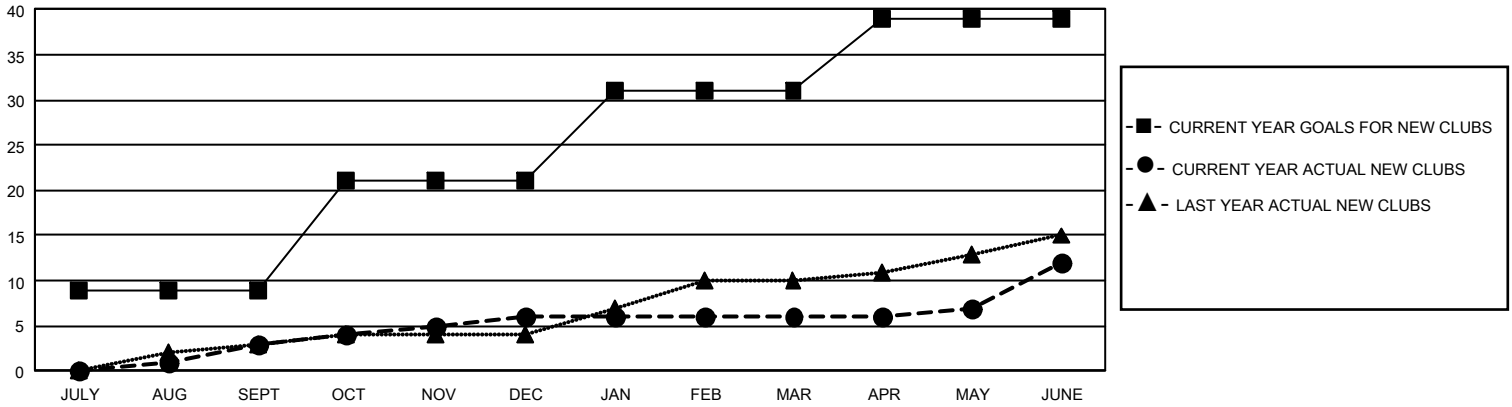
GMT Constitutional Area 1, Group M

REPORT DOES NOT INCLUDE CLUBS IN UNDISTRICTED AREAS.

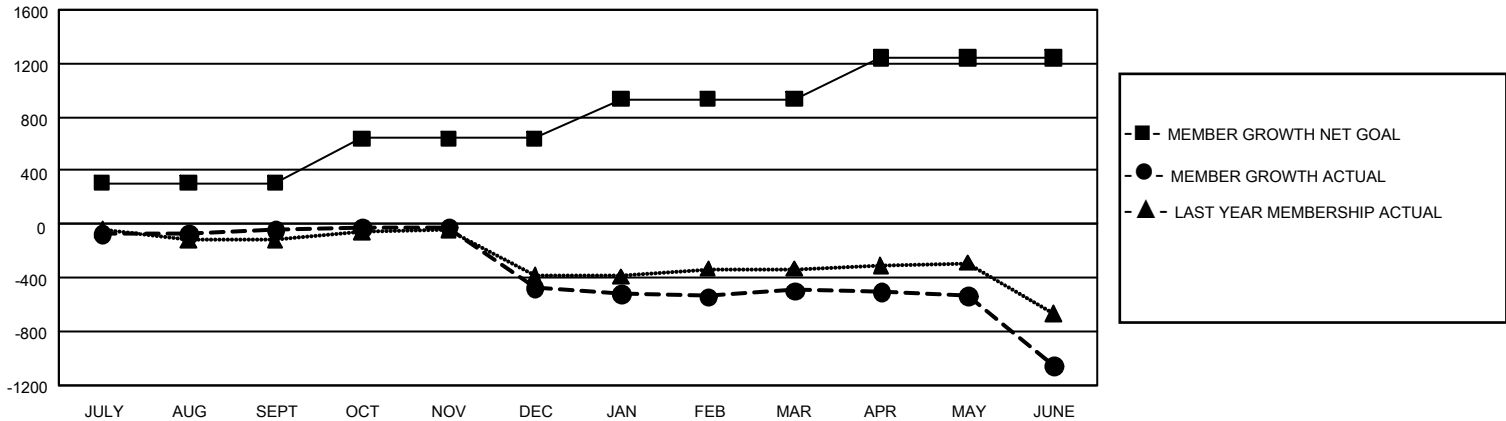
Clubs			
RESULTS FOR 2022-2023			
QUARTER	NEW CLUB GOAL	NEW CLUBS	DROPPED CLUBS
JULY/AUG/SEPT	27	3	7
OCT/NOV/DEC	36	3	18
JAN/FEB/MAR	30	0	7
APR/MAY/JUNE	24	6	21

Members			
RESULTS FOR 2022-2023			
QUARTER	MEMBER GROWTH NET GOAL	MEMBER GROWTH ACTUAL	DROPPED MEMBERS ACTUAL (including transfers)
JULY/AUG/SEPT	306	618	561
OCT/NOV/DEC	335	550	939
JAN/FEB/MAR	292	670	611
APR/MAY/JUNE	307	735	1,205

GOALS AND ACTUAL NEW CLUBS CUMULATIVE



GOALS AND ACTUAL MEMBERS CUMULATIVE



DROPPED CLUBS: 53 DROPPED MEMBERS DECEASED 347 CLUB CANCELLED 432 OTHER 2,539 TOTAL 3,318	463 CLUBS OF 798 ADDED 1 OR MORE NEW MEMBERS	GENDER DISTRIBUTION MALE 9,853 (60.65%) FEMALE 6,389 (39.32%) NON BINARY 1 (0.01%) PREFER NOT TO ANSWER 4 (0.02%)
	CLICK HERE FOR CUMULATIVE MEMBERSHIP DATA	TOTAL FAMILY UNIT MEMBERS 3,430 FAMILY MEMBERS PAYING HALF DUES 1,757